

SAFE® 96 XT

XSX 200 SX 300 MX 500 LX 1000

SAFE® 96 IT

MI 500 LI 1000

SAFE® 48 XT

XLX 2000 XLX 4000

SAFE® 24 XT

XXLX 2000* XXLX 4000* XXLX 6000* XXLX 8000*

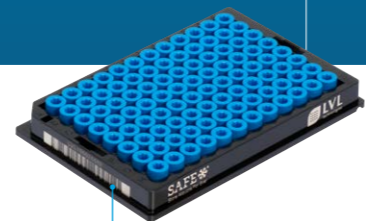
*Available Q2 2019

2D Sample Storage and Biobanking Solutions for Demanding Long-term Sample Archiving Requirements



Working Volume												
with Screw Cap	220 µl	300 µl	500 µl	1,000 µl	480 µl	1,000 µl	2,000 µl	4,000 µl	2,000 µl	4,000 µl	6,000 µl	8,000 µl
with Push Cap	220 µl	300 µl	500 µl	1,000 µl	550 µl	1,070 µl	n/a	n/a	n/a	n/a	n/a	n/a
with Heat Seal	250 µl	330 µl	530 µl	1,030 µl	600 µl	1,120 µl	2,000 µl	4,000 µl	2,000 µl	4,000 µl	6,000 µl	8,000 µl
Type of Rack	96 SBS Rack	96 SBS Rack	96 SBS Rack	96 SBS Rack	96 SBS Rack	96 SBS Rack	48 SBS Rack	48 SBS Rack	24 SBS Rack	24 SBS Rack	24 SBS Rack	24 SBS Rack
Type of Rack Lid	Slide Lock	Slide Lock	Slide Lock Push Lock	Slide Lock Push Lock	Slide Lock Push Lock	Slide Lock Push Lock	Slide Lock	Slide Lock	Slide Lock	Slide Lock	Slide Lock	Slide Lock
Storage Temperature												
with Screw Cap	- 196°C	- 196°C	- 196°C	- 196°C	- 196°C	- 196°C	- 196°C	- 196°C	- 196°C	- 196°C	- 196°C	- 196°C
with Push Cap	- 80°C	- 80°C	- 80°C	- 80°C	- 80°C	- 80°C	n/a	n/a	n/a	n/a	n/a	n/a
with Heat Seal	- 80°C	- 80°C	- 80°C	- 80°C	- 80°C	- 80°C	n/a	n/a	n/a	n/a	n/a	n/a
Outer Diameter	8.65 mm	8.65 mm	8.65 mm	8.65 mm	8.65 mm	8.65 mm	12.80 mm	13.00 mm	17.80 mm	17.80 mm	17.80 mm	17.80 mm
Tube Height												
without Cap	14.6 mm	18.2 mm	26.2 mm	44.3 mm	26.9 mm	44.8 mm	44.2 mm	82.5 mm	24.5 mm	39.0 mm	55.5 mm	69.7 mm
with Screw Cap	16.0 mm	19.5 mm	27.5 mm	45.6 mm	33.1 mm	51.2 mm	45.5 mm	83.8 mm	25.9 mm	40.4 mm	56.9 mm	71.2 mm
with Push Cap	16.0 mm	19.5 mm	27.5 mm	45.6 mm	28.0 mm	45.9 mm	n/a	n/a	n/a	n/a	n/a	n/a
Side code labelling												
Barcode 1D	No	No	Optional	Optional	Optional	Optional	Yes	Yes	Optional	Optional	Optional	Optional
Human Eye Visible	No	Optional	Optional	Optional	Optional	Optional	Yes	Yes	Optional	Optional	Optional	Optional
Screw Caps												
Pre-capped	Yes	Yes	Yes	Yes	Yes	Yes	Yes	Yes	Yes	Yes	Yes	Yes
on Cap Rack	Yes	Yes	Yes	Yes	Yes	Yes	Yes	Yes	Yes	Yes	Yes	Yes
Bulkware	Yes	Yes	Yes	Yes	Yes	Yes	Yes	Yes	Yes	Yes	Yes	Yes
Available presterilized	Optional	Optional	Optional	Optional	Optional	Optional	Optional	Optional	Optional	Optional	Optional	Optional
Availability	Rack, Bulk	Rack, Bulk	Rack, Bulk	Rack, Bulk	Rack, Bulk	Rack, Bulk	Rack, Bulk	Rack, Bulk	Rack, Bulk	Rack, Bulk	Rack, Bulk	Rack, Bulk
Rack Height												
without Cap	15.1 mm	18.7 mm	26.7 mm	44.8 mm	27.4 mm	45.3 mm	44.7 mm	83.2 mm	n/a	n/a	n/a	n/a
with Screw Capped Tubes	16.5 mm	20.2 mm	28.0 mm	46.1 mm	33.6 mm	51.7 mm	46.0 mm	84.5 mm	26.4 mm	40.9 mm	58.7 mm	73.0 mm
with Rack Lid	22.3 mm	22.3 mm	30.3 mm	48.3 mm	36.3 mm	54.3 mm	48.4 mm	87.0 mm	29.9 mm	43.8 mm	60.6 mm	74.5 mm

Rack XSX 200



Rack XLX 2000



Rack XXLX 2000





Store Aliquots For Ever

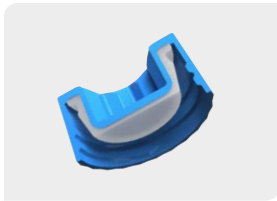
SAFE® 2D tubes from LVL technologies offer the greatest possible safety, automation capacity, flexibility and efficiency. In combination with attractive pricing, we have already convinced many customers all around the world, including in the following areas, to rely on SAFE® in the long-term:

- Biobanking
- Epidemiological studies
- Cohort studies
- Transfusion medicine
- Compound management
- Forensics
- Kit manufacturing

Tightness

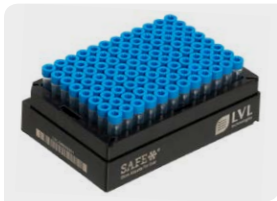


- Internal thread: best sealing- and closing capability through injected TPE compression ring and enlarged contact surface by ring of tube.



- External thread: best sealing- and closing capability through injected patented two-phase TPE compression with Liquid Sealing and Vapour Sealing.

Stability



- Tubes with enlarged wall thickness
- Racks dimensionally stable
- Optional Polycarbonate or Polypropylene
- Storage at temperatures from -196°C

Identifiability



- Unique 2D code laser edged
- Optional side code labelling
- Rack with 1D code and 2D orientation code

Decapping



Aliquoting / Dispensing



Capping

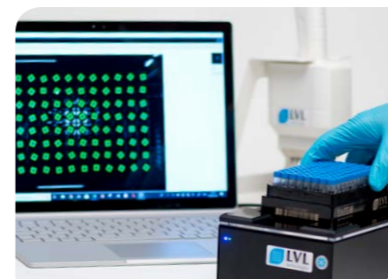


Storing



WORK FLOW
CIRCLE

Reading

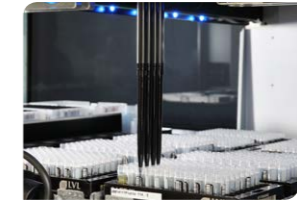


Efficiency



- Much more efficient compared to classic primary or warehouse tubes
- Tubes with external thread particularly efficient because of the low profile closure

Compatibility and Automation Capacity



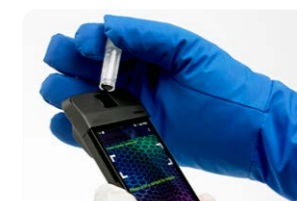
- SBS format of the tube racks
- Racks can be stacked
- 1D bar code on different rack sides, optional
- 2D orientation code on the base of the rack
- 2D codes of the tubes in the ECC200 standard and decodable using current scanners
- Tubes can be locked in the rack ready for screwing
- Screw caps constructed for the bit receptacle with semi-automated and fully automated cappers/decappers
- Screw caps can also be delivered in the SBS cap rack, optional
- Compatibility (e.g. picking) guaranteed with all current automated storage systems (certificates can be requested)

Flexibility and Customisation



- Customized coding
- More than 12 different cap colours
- Tubes can be closed optionally with Screw Caps, Push Caps or Heat Sealing Foil

Technical Infrastructure available



- Code Reader incl. software
- Capper / Decapper
- Accessories

LVL technologies GmbH & Co. KG
Theodor-Storm-Straße 17
74564 Crailsheim
Germany

Phone: +49 7951 95613-20
Fax: +49 7951 95613-33
info@lvl-technologies.com
www.lvl-technologies.com